

Get the Royal Edge Advantage with RPI



Re-Flex EPDM Taped Pitch Pockets

RPI RE-FLEX EPDM MEMBRANE

DESCRIPTION

RPI Re-Flex EPDM Taped Pitch Pockets are white EPDM Pitch Pockets with pre-laminated Tape Adhesive and a 2 inch wide plastic support strip. Designed to be installed around roof penetrations that will not accept Pipe Boots and filled with RPI Pourable Sealer. Must be installed using RPI Re-Flex Tape Primer.

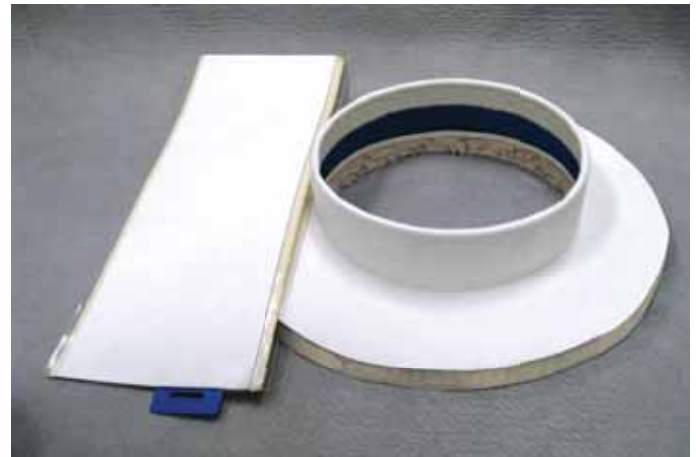
Refer to the RPI Specification Manual and Application Handbook for more detailed applications.

THE RPI ROYAL EDGE ADVANTAGE

- Available in 6" diameters.
- May be warmed for easier application during cold weather applications.
- Clear poly release liner won't tear or wrinkle like brown paper liner.
- Excellent long term performance.
- Multiple pockets may be combined for large penetrations.
- May be installed two high for greater depth.

INSTALLATION

1. All membranes and substrates must be clean, dry, and free of dirt, dust, and oils. Before applying Seam Tape Primer, clean all metal flashings with Membrane cleaner to remove any residual manufacturing oils or other contaminants.
2. Apply RPI Re-Flex Seam Tape Primer. On RPI Clean Sheets, the Seam Tape Primer can be applied using a 3/8" nap roller. On any aged or talc sheet membranes, Seam Tape Primer must be applied using RPI Scrub Pads after the membrane has been thoroughly cleaned with a clean cotton cloth and Membrane Cleaner. Do not allow the primer to contact the blue plastic inside wall support.
IMPORTANT: Do not over apply the Seam Tape Primer. The finished primed surface should have a smooth flat sheen. Excessive amounts of primer will not enhance the adhesion of the tape.
3. Allow the primed area to "flash-off". Check the primer using the finger-push method. Do not attempt to apply any to areas that have not been properly primed or primed areas that have not sufficiently flashed-off.
4. Align and install the Taped Pitch Pocket around the roof penetration.
IMPORTANT: All roof penetrations should be a minimum of 1" from the Taped Pitch Pocket vertical perimeter.
5. Using a 2" steel or hypalon hand roller, roll the entire strip first rolling across the strip and then the length of the strip. Roll any exposed tape edges.
6. Apply Uncured t-joint patches or Lap Sealant at required flashing edges and intersections.



7. Before filling the Taped Pitch Pocket, apply Primer to the penetration, the field membrane around the penetration, and the inside of the Taped Pitch Pocket. Do not allow primer to contact the blue plastic strip.
8. Allow the primer to dry and fill the pitch pocket with one part or two part pourable sealer. IMPORTANT: Crown the sealer to eliminate any standing water in the pitch pocket.

Typical Properties and Characteristics

Color	White
Membrane	EPDM Synthetic Rubber
Shelf Life	6 months when stored between 60°F - 80°F
Size/Weight	6" - 7 lbs/carton of 12 pcs.

Typical properties and characteristics are based on samples tested and are not guaranteed for all samples of this product. This data and information is intended as a guide and does not reflect the specification range for any particular property of this product.

RPI Taped Pitch Pockets meet or exceed the minimum requirements set forth by ASTM D4811 for a Type 1, Class V EPDM.

COLD WEATHER INSTALLATIONS

To ensure complete and proper adhesion in cold weather applications (temperatures of 50° F or lower), keep the flashings stored above 60°F until installation. The primed area and flashing membrane may be warmed with a hot-air gun while installing the flashings.

Due to solvent flash-off, condensation may form on freshly applied primer when the ambient temperature is near the dew point. If condensation develops, the application of primer and RPI Taped Pitch Pocket must be discontinued, as proper adhesion will not be achieved. When weather conditions permit, allow the surface to dry and apply a thin fresh coat of primer to the previously coated surface and apply the Pitch Pocket.

All penetrations must be free of contaminants and insulations and primed before the pourable sealer is added to the Pitch Pocket.

Get the Royal Edge Advantage with RPI



Re-Flex EPDM Taped Pitch Pockets

RPI RE-FLEX EPDM MEMBRANE

PRECAUTIONS

Avoid prolonged contact with skin. In case of contact with skin, thoroughly wash affected area with soap and water.

KEEP OUT OF REACH OF CHILDREN.

Prolonged job site storage temperatures in excess of 90°F (32°C) will diminish the product's shelf life.

In hot, sunny weather, store rolls on-site in original boxes, in a shaded area, until ready to use.

STORAGE

Prolonged job site storage temperatures in excess of 90°F (32°C) will diminish the product's shelf life.

In hot, sunny weather, store rolls on-site in original boxes, in a shaded area, until ready to use.

RPI Re-Flex EPDM Taped Pitch Pockets must be stored in a dry area. Keep away from open sources of flame or ignition.

Refer to the RPI Specification Manual or Application Handbook for the specific application detail.

LEED® Information

Pre-consumer Recycled Content	2%
Post-consumer Recycled Content	0%
Manufacturing Location	Greenville, IL
Solar Reflectance Index	N/A